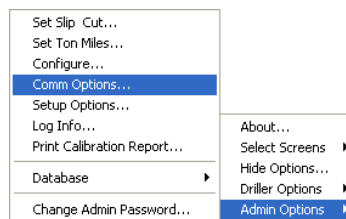


5 Configuring Workstation Properties

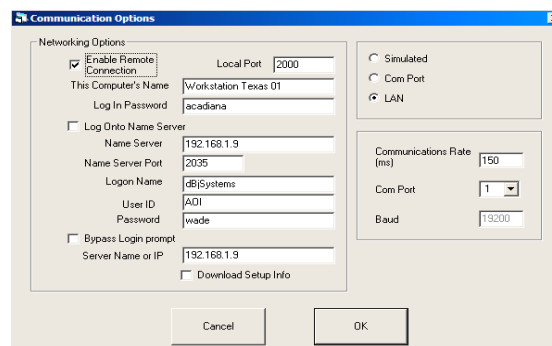
After the ADMS hardware and software is installed as described in previous chapters, configure AOI Drill Monitor software on each workstation – including each RDU and the DDU – according to the instructions in this chapter.

Configuring workstation communication properties

1. If necessary, enable options (see “Enabling options” on page 41).
2. Click the **Menu** button (F12).
The menu opens.
3. Click **Admin Options**.
4. In the menu that opens, click **Comm Options**.



The Communications Options dialog box opens.



Configuring workstation communication properties

Note: RDUs can be connected to the DAC via Ethernet or RS-232.

The DDU is **always** connected to the DAC via a serial connection using RS-232 protocols.

5. *If this workstation is connected to a server and/or other remote computers via Ethernet (LAN, Internet, etc):*

- a. Select the **Enable Remote Connection** check box.

Note

Do **not** select this check box if this workstation is connected directly to the DAC via an RS-232 com port connection.

- b. In the **Local Port** field, type 2000, if this value is not already supplied.
- c. In the **This Computer's Name** box, type a descriptive name that identifies this workstation and drilling location. (For example: Workstation Texas 01.)
- d. In the **Log In Password** box, type the password required to log in to the server.

If this workstation is connected to a server that has a dynamic IP address:

- a. Check the **Log Onto Name Server** check box.
- b. In the **Name Server** box, type the name or IP address of the server this workstation will connect to.
- c. In the **Name Server Port** box, type the port number of the server this workstation will connect to.

Note

The name server and name server port are rig-specific. Contact AOI if you need assistance locating this information.

- d. In the **Logon Name** box, type the name used to log on to the server.
- e. In the **User ID** box, type the user ID for the server.
- f. In the **Password** box, type the password for the user.
6. If you want this workstation to be able to log on to the name server without requiring the user to enter a user ID and password, select the **Bypass Login prompt** check box; then type the name server's name or IP address.

Configuring workstation communication properties

7. To download all the server's configuration settings to the workstation each time it connects, check the **Download Setup Info** check box.

Note

Although you can download the server's configuration settings, each workstation has its own local **alarm limits**. See page 102.

8. Select the communication mode and port options:

If this workstation is connected directly to the DAC via an RS-232 connection:

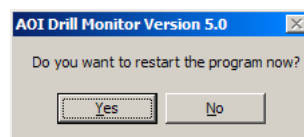
- a. Select the **Com Port** option.
- b. In the **Com Port** field, select the COM port used to communicate with the DAC. Choose **COM 1, 2, 3, or 4**. (**Com Port 1** is typically the port to choose.)
- c. In the **Communication Rate** box, enter the value 150.

If this workstation is connected via Ethernet (LAN):

Select the **LAN** option.

9. After you set the communications options for the workstation, click **OK**, or **Tab** to the **OK** button and press **Enter**.

A message appears that prompts you to restart the application.



10. Click **No** to continue configuring workstation properties (as described in the next section)

or

Click **Yes** to restart the system if you have already configured other workstation properties.

Note

When you restart the system after making changes to the communications options that include LAN settings, you will need to have an IP address and password ready during startup. See "Overriding window gauge properties set in the Daq window" on page 101.

Configuring workstation properties

Configuring workstation properties

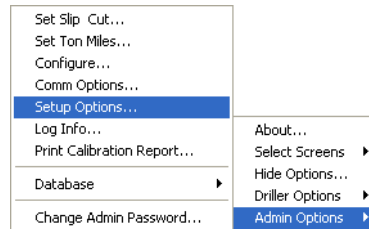
These properties determine the operating characteristics of each workstation, and include the following choices for AOI Drill Monitor windows that the workstation displays:

- Whether the workstation uses a touchscreen interface
- Whether the workstation logs database information
- Whether the workstation is a Remote Display Unit (RDU) or is the Driller's Display Unit (DDU).

Follow these steps to configure the workstation's global properties:

Note: *If necessary, enable Administrative options (see "Enabling options" on page 41).*

1. Click the **Menu** button (F12).
The menu opens.
2. Click **Admin Options**.
3. In the menu that opens, click **Setup Options**.



The Setup Options dialog box opens.

Note

Notice that in Figure 42 and Figure 43 the most significant difference between the DDU and RDU is the **Remote Monitor** option.

Figure 42. Typical RDU settings

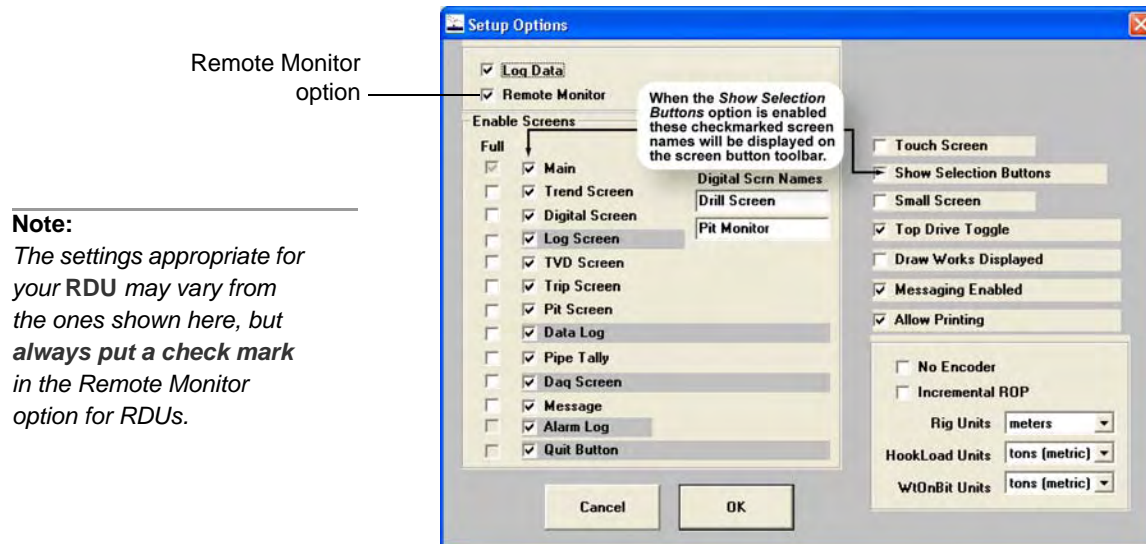
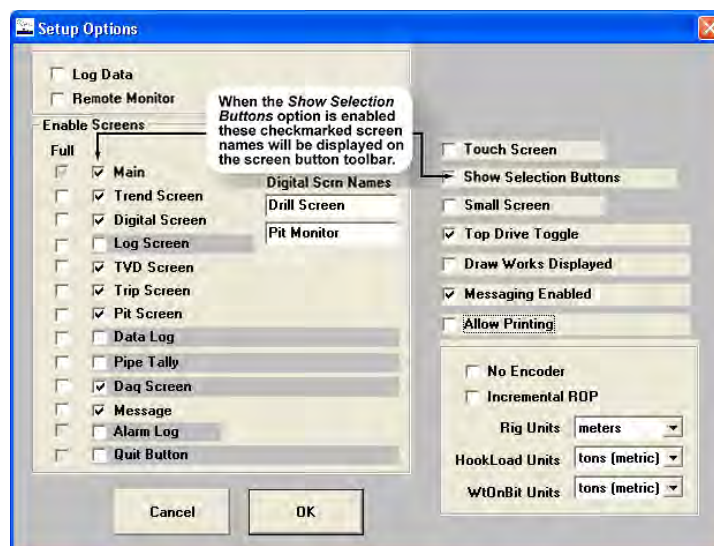


Figure 43. Typical DDU settings

Note:

The settings appropriate for your DDU may vary from the ones shown here, but **always** leave the Remote Monitor option **unchecked** for the DDU.

In Figure 43, the Daq screen is shown enabled (checked), as it should be while you are configuring the system. During normal operation, disable Daq screen display.



- If you want this workstation to log drilling data to the database, check the **Log Data** check box.