

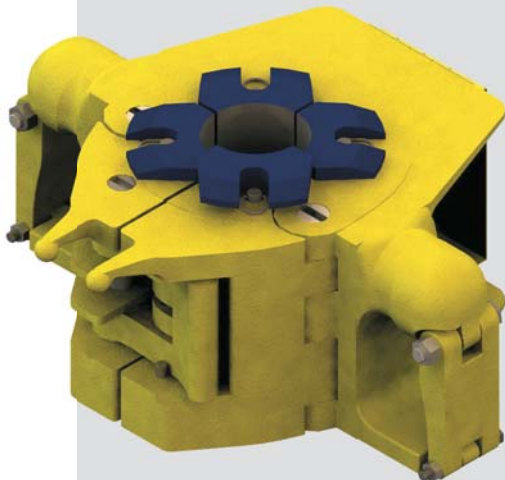
XP1000 EXTREME PERFORMANCE HANDLING SYSTEM

SUPPORTS ULTRA-HIGH LOADS
ASSOCIATED WITH CRITICAL
DEEP WATER AND
DEEP WELL OPERATIONS



Access Oil Tools
introduces the next
generation slip system
designed to handle
heavy landing string
applications and
ultra-deep drill strings

Extreme Performance **XP1000 ELEVATOR**



*Minimizes injuries by removing personnel
from critical path area*

Extreme Performance **XP1000-20 SLIP SYSTEM** [PATENTED]



Load-rated at 1000 tons

Unique design minimizes slip failure

XP1000 EXTREME PERFORMANCE HANDLING SYSTEM

SUPPORTS ULTRA-HIGH
LOADS ASSOCIATED
WITH CRITICAL
**DEEP WATER AND
DEEP WELL OPERATIONS**

Extreme Performance

XP1000-20 SLIP SYSTEM [PATENTED]



Load-rated at 1000 tons

- New taper design and extended contact area minimize pipe crushing
- Reduces personnel fatigue and injuries
- 73% higher safe load handling capabilities

Unique design minimizes slip failure

Conventional design



Continuous insert slot

Subject to point-loading in the toe area

XP1000-20 design



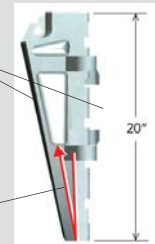
Load rings machined into slip body

Insert design supports local weight distribution

String weight distributed throughout the slip body –
No point-loading in toe area

Minimizes pipe crushing

Extended contact area



Modified geometry

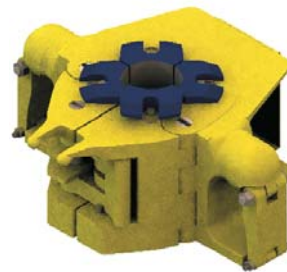
Access Oil Tools is a leading manufacturer and supplier of tubular handling equipment for drilling contractors, operators, and service companies worldwide. For 20 years, Access has built its reputation on developing and manufacturing high-quality manual and power operated pipe handling tools.

Manual Tools Elevators, Slips, Spiders, Tongs, Safety Clamps, Scrapers, Stabbing Guides, Bowls and Kelly Drive Bushings.

Powered Tools Access BackSaver™, Kelly Spinner, Phantom Mouse® Mousehole Tool, Twister Torque® and Twister Spin®.

Extreme Performance

XP1000 ELEVATOR



Load-rated at 1000 tons
when using pipe with 18-degree taper tool joints

- Enables safe and rapid pipe installation
- Can be used with multiple pipe sizes and grades
- Can be used with 750-ton or 1000-ton links
- Hydraulically operated from a remote operator's panel
- Compact, versatile design – much smaller than other 1000-ton elevators
- Uses hardened, replaceable insert bushings
- Secondary load latch prevents elevator from opening under load

Headquarters

3711 Melancon Road
Broussard, Louisiana 70518 USA
Phone: 337.367.5044
Fax: 337.367.0795
sales@accessoiltools.com

Sales and Customer Service

Toll Free Phone (in North America only): 800.832.7349
Phone: 337.367.5044
Fax: 337.367.5047

**Complete list of products
and services available at
www.accessoiltools.com**